

Customized Completions

State-of-the-Art
& Functional



 **JET AVIATION**

Contents



Basel 1-4

Boeing Business Jet (BBJ)	5
Boeing Business Jet (BBJ)	6
Boeing Business Jet (BBJ)	7
Airbus 320	8
Airbus Corporate Jet (A319CJ)	9
Airbus Corporate Jet (A319CJ)	10
Gulfstream Vs	11
Falcon 900/2000	12
Boeing 767	13
Boeing 757	14

West Palm Beach 15-16

Gulfstream IV	17
Gulfstream III	18
Falcon 900	19
Falcon 900	20
Challenger 600	21
Boeing 727	22

Basel

Aircraft completed at Jet Aviation Basel evoke the perfect blend of old-world craftsmanship and sophisticated engineering.



Engineering

Renowned worldwide for delivering innovative design and uncompromised luxury, Jet Aviation Basel delivers custom aircraft interiors, which meet the demands of the most discerning aircraft owners. Jet Aviation's completions capabilities encompass a full range of turbine aircraft, from small business jets to the largest airliners.



Design

Basel

A factory-approved completions center for the Boeing Business Jet (BBJ) and the Airbus 319 Corporate Jetliner, Jet Aviation's six-hangar facility in Basel accommodates aircraft as large as Boeing 747s.

The time-proven process by which each aircraft is outfitted is itself a work of art. Detailed program management keeps the visions of designers and engineers connected to the real world of production.



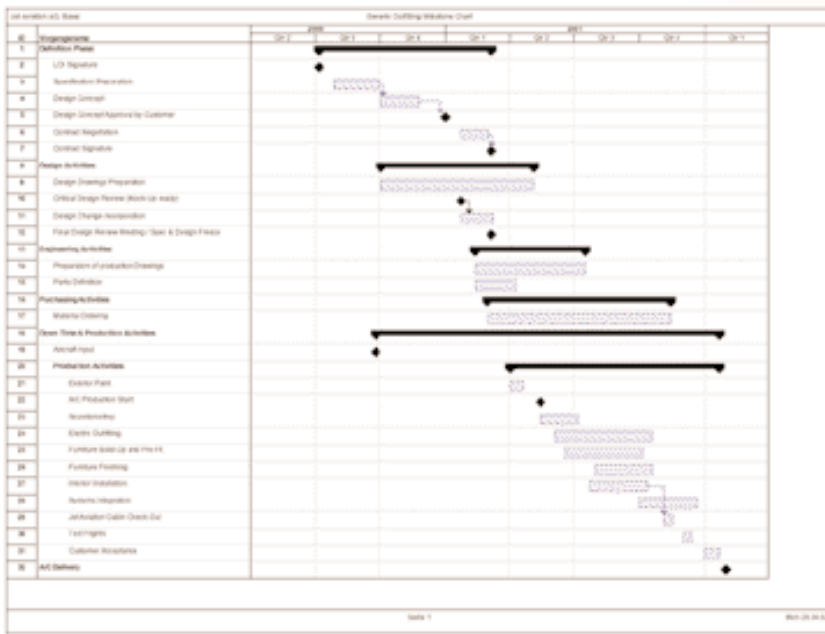
Production (Avionics)

Throughout the completions process, Jet Aviation's designers work side-by-side with project planners, engineers and production craftsmen to guarantee the finished aircraft fulfills the vision of its original design.

The completions process by which new or "green" aircraft are outfitted can include up to eight project stages, each characterized by clear communication between Jet Aviation's various departments and with the customer.



Production (Cabinetry shop)



Completions schedule



Painting

Design

Jet Aviation's in-house design team works with clients and some of the world's leading designers to produce innovative and contemporary aircraft designs. These on-site interior designers generate floor plans, select fabrics and materials, produce hand-drawn illustrations, make computerized renderings and take the project from concept to engineering and production.



Design (Basel design team)

Mock-Up

As part of the design process, and on demand just before engineering and planning begins, a full or partial life-sized mock-up of a proposed interior can be installed. This allows the aircraft's new interior to be previewed and modifications to be made prior to actual production.

Planning

Detailed planning is the key to successful results. Jet Aviation allocates resources and personnel in the right place at the right time to assure customer satisfaction and on-time delivery. Every project is overseen by a project manager, who is one point of contact for the customer.



Mock-up



Finishing

Engineering

Converting designer's visions and artistry into functional cabinetry and seating is the work of Jet Aviation's highly skilled engineers. Every component and system is perfectly engineered to reduce weight and comply with airworthiness guidelines. In-house certifications are performed on major and minor modifications.

Exterior Painting

The aircraft's exterior is painted with the same attention to detail and technical precision as the interior outfitting. Painting takes place during the most suitable time in the production process.



Engineering



Painting

Production

Jet Aviation's reputation for uncompromising craftsmanship has been earned by applying the highest quality standards to every aspect of production. With in-house sheet metal fabricators, electronic systems installers, custom cabinetmakers and skilled upholsterers, Jet Aviation provides greater control and precision throughout the production process.

Prefit

Prefit is the stage at which finished or partially finished components are placed within the aircraft to ensure all interior parts can be installed as engineered.

Finishing

At this stage, the craftsmen who have built the interior components bring the materials to a pristine state, ready for final installation. As all elements are brought together to form an interior, the custom designs become reality.



Production (Sheet metal shop)



Production (Woodworking)

Boeing Business Jet (BBJ)

As the first Boeing Business Jet (BBJ) ever completed for an Asian operation, this aircraft was designed, engineered, built and certified entirely by Jet Aviation. A team of in-house designers collaborated to create this exquisite interior. Since the aircraft was to be utilized for multiple purposes and individuals, the interior was designed without being personalized for any one traveler.



Bathroom

Designed around the Zen principles of harmony, tranquility and symmetry, the aircraft was outfitted in two distinct sections. The forward cabin was built similarly to an airliner's first class seating area with rows of fabric-backed seats. The aft cabin was outfitted as a VIP lounge with comfortable divans and electronic tables. A VVIP section was also created as a private suite, convertible into an



VVIP section

office or bedroom with access to a master bath. The center of the aircraft was used to integrate an airliner-class galley and a telecommunications center, equipped with sophisticated telecommunications and entertainment equipment.



VIP aft cabin lounge



Entranceway



Forward cabin

Boeing Business Jet (BBJ)

Jet Aviation's design and engineering teams translated design concepts into an interior for this elegantly appointed BBJ.

Designed to meet the owner's personal taste, the aircraft's interior was finished in a French haute couture style, conducive to business, yet wonderfully comfortable.

Strict attention to the smallest aesthetic details was matched with sophisticated high-tech systems, including cockpit and tail-mounted cameras.



Bedroom



Forward seating area



Bathroom



Seat detail



Lounge

Boeing Business Jet (BBJ)



Forward main lounge



Aft main lounge



Galley



Private suite



Marquetry detail

This aircraft was the first VIP BBJ ever to be outfitted in Europe. The owner of this BBJ played an active role in overseeing its design and completion. Created by a Paris designer and with the help of Jet Aviation's in-house designers and engineers, a collection of beautifully hand-drawn, images was perfectly translated to wood to create ornate tables and wall motifs.

A classic French style was chosen that included

detailed wood marquetry, faux painted wood columns, painted ceilings and etched and molded glass sculptural inlays. Mirroring the aesthetic virtues of the interior were

the aircraft's many advanced mechanical, electrical and telecommunications features.



Entranceway

Airbus 320

The forward lounge of this Airbus 320 uses gentle, curved lines and surfaces, creating a visually soothing environment for its VIP passengers. A private office and a divan that converts to a king-sized bed provide comfort and privacy as well as a private suite.

For comfort and privacy, eight club seats were arranged in the executive seating area. The aft portion of the aircraft holds 30 economy class seats, permitting travel for a large number of passengers.

For the safety of its passengers, this aircraft was provisioned with a self-contained medical bed.



Private bathroom



Aft seating area



Private suite



Private stateroom



Forward lounge



Communications centre



Forward lounge

Airbus 319 Corporate Jet



Cup holder



Swipe-card telephone



Fold-out table



Bulkhead table & chair



Main cabin



Main cabin

One of the first completions centers authorized by Airbus to outfit its aircraft, Jet Aviation Basel shows its experience, craftsmanship and expertise throughout this Airbus Corporate Jetliner. A highly professional atmosphere optimized for passenger productivity was the mandate for its design and final outfitting. Light, warm-colored fabrics, leather and carpeting give the aircraft a comfortable ambiance.

Special attention was given to long-range travel comfort. A pair of seats and a mattress attachment come together to form eight beds, separated by privacy curtains, which allow for solitude.

Airbus 319 Corporate Jet

Jet Aviation equipped this Airbus 319 Corporate Jet to transport up to 34 passengers in a private, comfortable environment. The aircraft completion was engineered, built and certified for public transport.

The cabin is divided into two areas. The forward section is equipped with leather and fabric club seating and cordless SATCOM handsets; the aft section offers a combination of club

seating and business-plus seating. Video monitors with Airshow and other programming are integrated into the seatbacks. The aft cabin houses a self-contained medical bed that can be quickly removed to function as a stretcher for medical transport.



Table detail



Bulkhead monitors



Forward section



Club seating area



Medical beds



Aft section

Gulfstream Vs



Main cabin



Aft lounge



Main cabin



Lavatory

Outfitted in close collaboration with the manufacturer, these three different Gulfstream V aircraft show Jet Aviation's ability to bring the highest level of customization to a new aircraft.

The many curved and sculpted interior surfaces required the design and construction of uniquely

molded switch panels and burl-wood cabinetry.

Different leathers and special fabrics were used in the seating areas and throughout the cabins. Custom-designed carpets

provide distinct personality, while floor-to ceiling bulkhead mirrors contribute to a bright, open environment.

A sophisticated security system was installed in some aircraft.



Main cabin



Main cabin

Falcon 900/2000

Jet Aviation completed these three new Falcon business jets. Each aircraft required special engineering. By adapting a basic Falcon design into an entirely new cabin configuration with specialized cabinetry, Jet Aviation brought its finishing touch to each of the three aircraft.

Completed in less than four months, the Falcon 900 shown here has handcrafted woodwork, replete with metal inlays and numerous other luxuries and technological features. The highly customized Falcon 900EX outfitting became one of the most elegant completions ever performed for a Falcon jet, while the Falcon 2000, a demonstrator aircraft, was displayed at the 2001 Paris Air Show because of its detailed interior outfitting.



Falcon 900



Falcon 2000



Falcon 2000



Falcon 900EX



Falcon 900EX

Boeing 767



Communications centre



Galley

Beginning with an interior design from Aviation Concepts, Inc., Jet Aviation Basel was entrusted with implementing this specialized Boeing 767 completion. The design chosen utilizes elements of both American and Arabic styling.

The aircraft's most distinctive features are its spacious, comfortable design, with fully customized seating and an abundance of bevelled mirrors to emphasize openness and enrich the details. A harmony of colors, including pinks, creams, and beige tones, was used throughout the aircraft along with birds-eye maple wood.



Private bedroom

To meet the client's requirements, a highly sophisticated Audio and Video on Demand entertainment system was developed and installed. The sumptuous bedroom includes a medical suite with intensive care capabilities. This aircraft depicts an excellent execution of design details, including the production of cabinetry moldings, seating designs and valance panels.



Master lounge

Boeing 757

Working with a harmonious palette of blue and taupe hues to form an exceedingly comfortable VIP environment, this Boeing 757 was outfitted with the same design concept and fine detail as the one pictured on the previous page.

Round, recessed mirrored ceilings, sculpted carpeting and floor-to-ceiling bulkhead woodwork



Master bedroom



Communications centre

distinguish this aircraft as one of the world's finest. Completed in only 12 months, this 757 was equipped with an Audio and Video on Demand system, intensive care medical capabilities in the bedroom and a SATCOM system.



Master lounge/dining area

Attention to detail is shown in the aircraft's cabinetry work and soft materials.



Master lounge with dark wood veneers



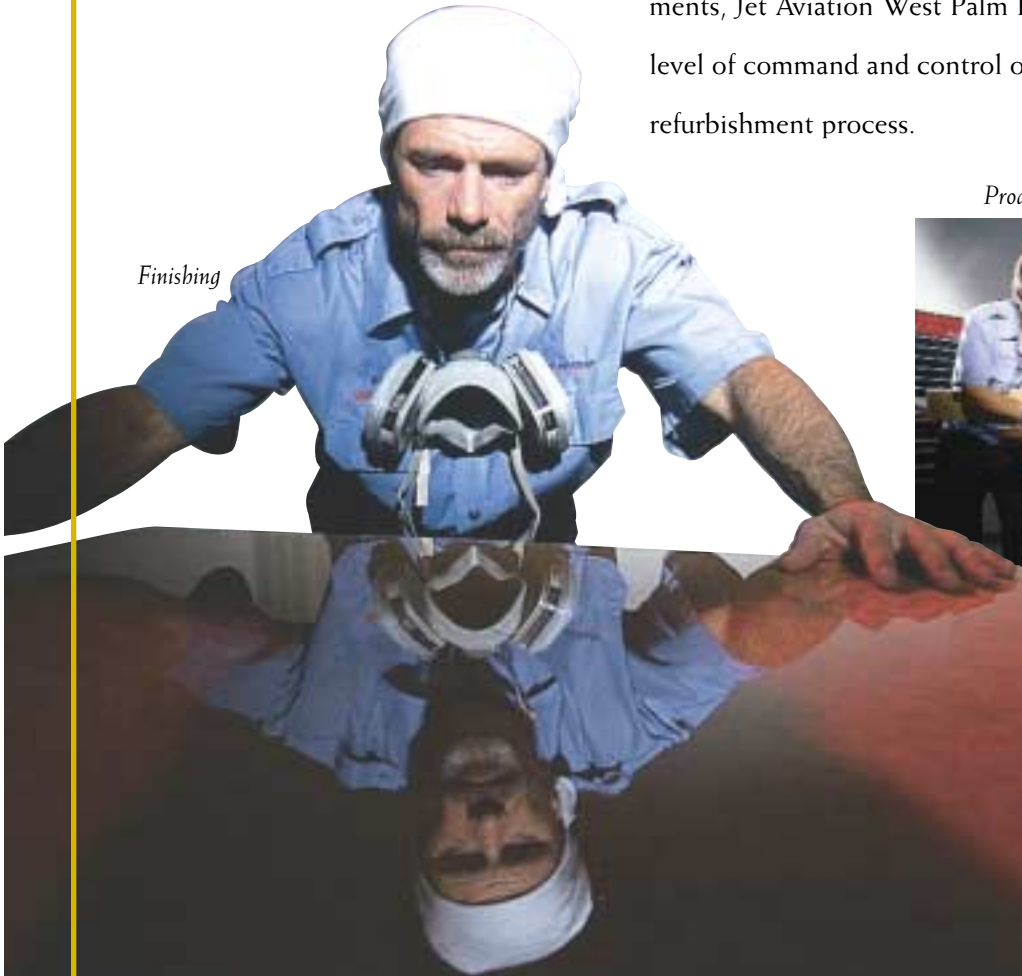
Private suite

Design by Aviation Concepts

West Palm Beach

Results that emerge from Jet Aviation's West Palm Beach refurbishment facility are equal parts art and science. Having in-house sheet metal, woodworking, upholstery, paint, electronics and avionics departments, Jet Aviation West Palm Beach offers a high level of command and control over the eight-stage refurbishment process.

Finishing



Production (Cabinetry shop)



Proposal / Design

Dedicated designers and engineers offer knowledgeable suggestions to create a comfortable and functional interior. Numerous sketches, material samples and engineering drawings are submitted to the client for consideration and approval.

Define Workscope/Planning

Detailed planning and resource allocation are the keys to accurate cost estimating. During this stage, the job is estimated and materials are allocated to facilitate an efficient workflow. Multiple assembly jobs are scheduled simultaneously to reduce downtime.

Engineering



Engineering

Jet Aviation's in-house engineering department designs aircraft modifications to ensure aviation requirements and regulations are met. Using Autocad and Mechanical Desktop engineering programs, production drawings are created.

Inspection and Removal

Upon arrival, the aircraft to be refurbished is inspected, photographed and its components are cataloged. Interior elements are removed for replacement or refurbishment.

Production and Paint

Able to accommodate aircraft up to the size of a Gulfstream IV, exterior painting is performed while interior elements are built or assembled.



Painting

This reduces the aircraft's downtime. A project coordinator provides the customer with a single point of contact for all questions.

Prefit

The various interior components such as seating, panels and cabinets are provisionally placed in the aircraft for adjustment or modification.

Finishing

The exquisite detail that Jet Aviation's customers have come to expect is the result of expert finishing of all aspects of a refurbishment. From the final layers of lacquer on hardwood cabinets, to the French seams on custom-leather seating, every detail is handcrafted to perfection.

Installation

At last, it all comes together. Interior components are installed. Final fit is assured. Interior parts are tested and approved.



Installation



Installation



Prefit



Production

Gulfstream IV

Offering a perfect balance of elegance, comfort and productive workspace, this Gulfstream IV was refurbished using a palette of light, warm tones and subtle textures.

The aircraft's upper sidewall panels were covered with ultra-leather, while the

panels below were covered with a leaf pattern to match the aircraft's new carpet. The quiet ambiance was further reflected in semi-gloss finish on all oak trim and by the satin almond gold finish on hardware components.



Overview of cabin looking forward



Aft divan seating area



Aft galley annex

Cabin bulkheads were re-covered in fabric and leather, creating a soft, comfortable look. Redesigned seats were handcrafted for a soft look and feel. The aircraft's divan was covered in custom-picked chenille fabric to coordinate with warm tones used throughout the aircraft's cabin, galley and lavatory.



Conference group



Forward to aft

Gulfstream III

This Gulfstream III was refurbished by first installing a Gulfstream IV shell kit to optimize cabin space. Modifications were made to the forward entryway and the aircraft's lavatory.

At the owner's request the galley was moved forward. The enlarged galley received new quarter-figured mahogany parquet flooring and unique faux-shaded window coverings. Handcrafted Brazilian mahogany cabinets and green leather seating give this Gulfstream III its luxurious, comfortable appearance.

The cabin was outfitted with a new conference table, new GV game tables and personal monitors built into the aircraft's sidewalls.



Conference group



Conference table fully stowed



Aft to forward



Galley with parquet flooring



Forward club seating

Falcon 900



Club seating with game table



Stowable office

Perhaps the most unique feature of this Falcon 900 refurbishment is its expertly refinished Toma Ash burl veneer. Used on the aircraft's bulkheads, doors, tables, galley and lavatory, this temperamental wood was painstakingly refinished by Jet Aviation's in-house woodworking shop to a beautifully consistent luster.

Chenille fabric and light tan leather were used to recover the aircraft's seating. Leather drink rails and silk window lines were also created.



Forward compartment club seating



Lavatory vanity

The aft cabin lavatory door was reconfigured at the customer's request to swing both forward and aft.



Aft compartment lounge

Falcon 900

Refurbishing this Falcon 900 required finding a specific supplier for the custom-made wool carpet requested by the customer.

As is often the case, Jet Aviation's design and production teams worked together to find the unique materials necessary to give the aircraft its distinctive character.

Wood veneers were made from Red Gum, a wood known for exceptionally uniform texture and interesting coloration.

Plated inlays were custom designed to provide a unique accent to the aircraft's game tables.



Conference group looking forward



Forward club seating



Aft cabin lounge with dual divans



Conference group looking aft

Challenger 600



Conference group



Serpentine galley

Whether providing complete design services or collaborating with world-renowned designers as in the case of this Challenger, the completions team at Jet Aviation translates the customer's definition of luxury and functionality into aircraft interiors that are both beautiful and practical. Craftsmanship and ingenuity are evident in this Challenger's birds-eye maple galley, incorporating three carved S-curves in its design.



Cabin view looking aft

Dado panels were constructed using wood and avonite inlays and embossed leather was used on the lower sidewalls. Infrared switches replaced faucet handles in the lavatory.



Forward club seating



Lavatory vanity

The aircraft's original three-piece headliner was also modified to create a seamless, one-piece headliner that retained the original PSU and window line.

Design by Donald Thompson Designs, New York, NY

Boeing 727

The completion of this Boeing 727 demonstrates the ultimate blend of aesthetics and functionality, resulting in an aircraft of superior refinement. The most distinctive feature is an overhead trompe l'oeil, an oil painting in the recessed ceiling depicting the open sky. To create this special ceiling required modification of the air duct, which became the 'canvas' for the oil painting.

Marble and granite surfaces were used throughout the aircraft, including in the lounges and galley. The stone was engineered for maximum visual luxury but minimal increase in weight.

Original woodwork by Jet Aviation's craftsmen included flat-cut walnut inserts in the bulkheads and walls. Carpathian Elm burl inlays were embedded in the game tables, which were then lined with deerskin and pearlized leather. Built-in Roman shades were also installed, creating a distinctive ambiance.



Master suite



Aft lounge with raised ceiling



Dining table with hand-painted ceiling



Master lavatory vanity



Entertainment cabinet

Design by Davis Bell Designs, San Francisco, CA



Jet Aviation Basel
P.O. Box 214
Basel Airport
CH-4030 Basel-Mulhouse / Switzerland
Tel. (41-58) 158 4111
Fax (41-58) 158 4004
jbsl@jetaviation.com



Jet Aviation West Palm Beach
1515 Perimeter Road
Palm Beach International Airport
West Palm Beach, FL 33406 / USA
Tel. (1-561) 233 7250
Fax (1-561) 233 7279
jpbi@jetaviation.com



www.jetaviation.com/completions



JET AVIATION

ALWAYS THERE - AROUND THE WORLD